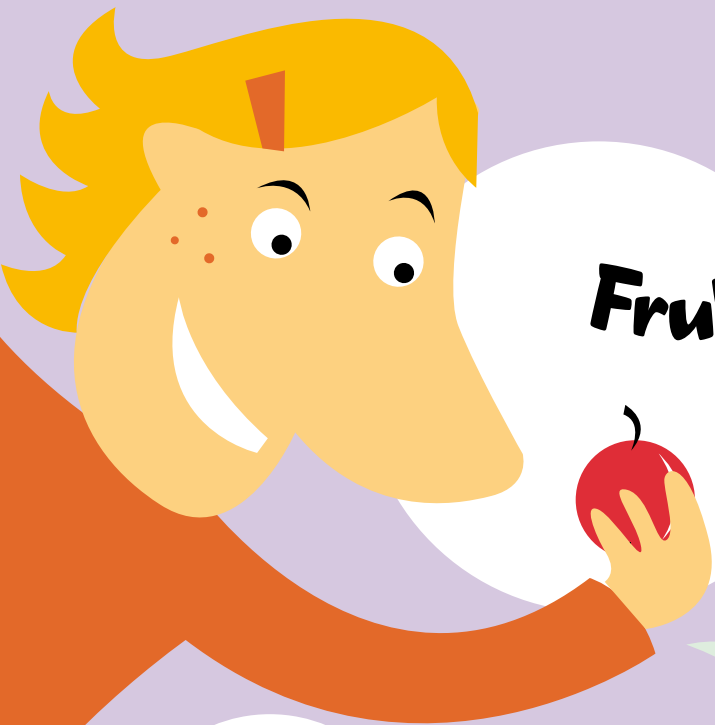
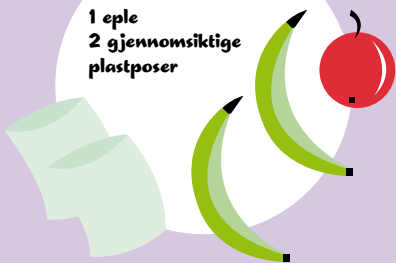


Fruktig eksperiment

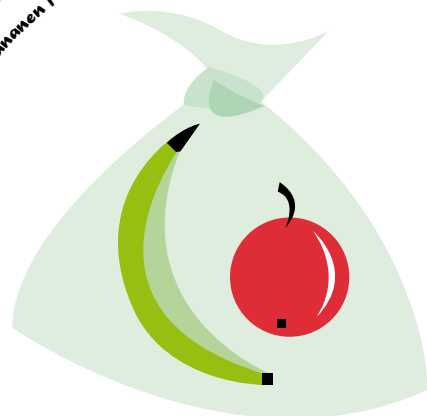


Du trenger:
2 umodne bananer
1 eple
2 gjennomsiktige
plastposer



Den andre grønne bananen legges i den andre posen.

Legg den ene grønne bananen i en pose sammen med et modent eple

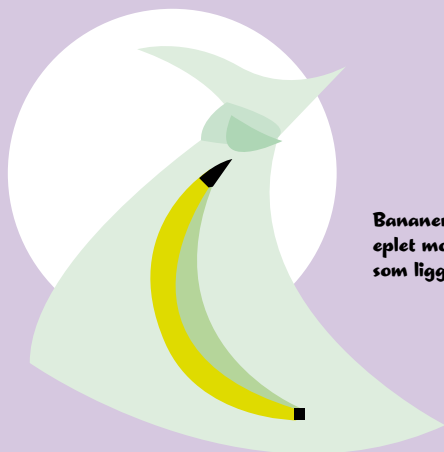
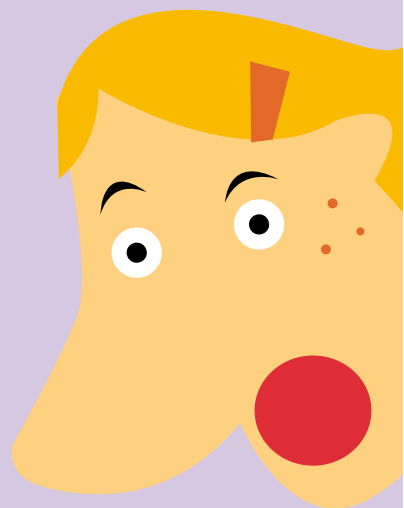


Knytt begge posene sammen i toppen.

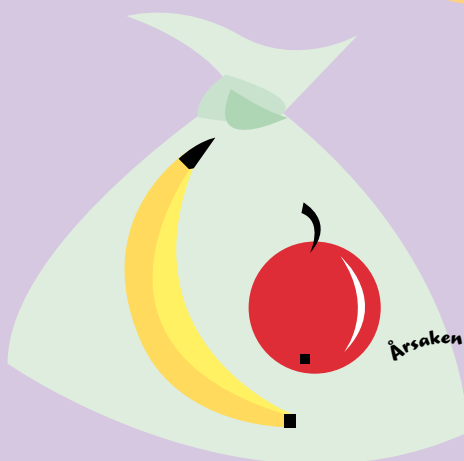
La det gå 2-5 dager.



Hva skjer?



Bananen som legges sammen med eplet modner forttere enn bananen som ligger alene.



Årsaken er at eplet utvikler gassen etylengass.