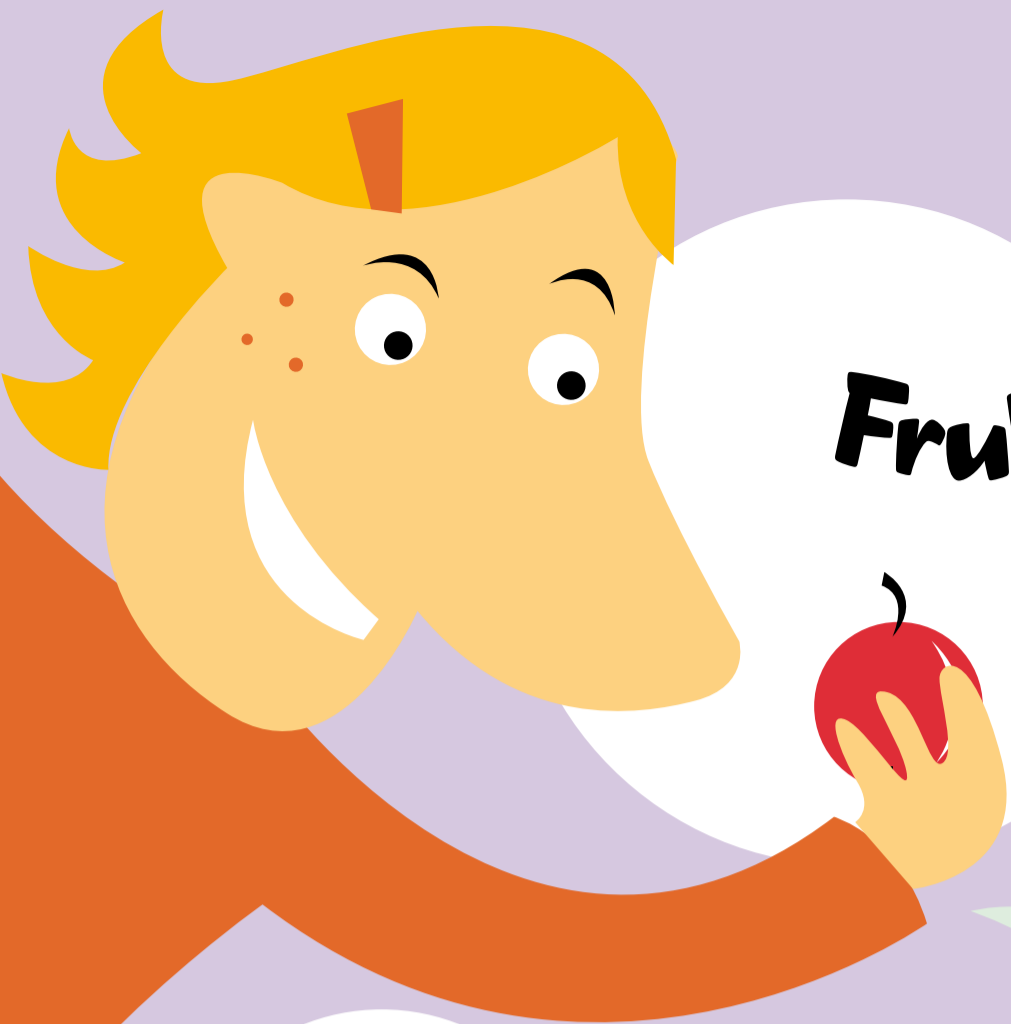
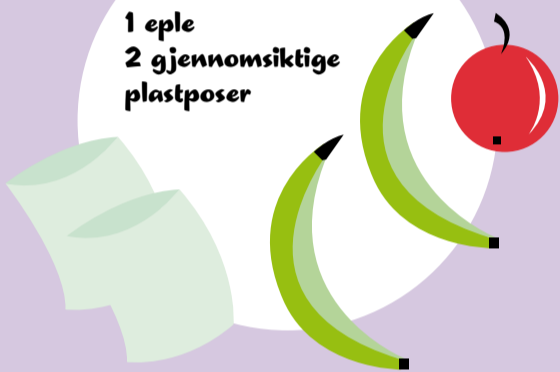


# Fruktig eksperiment

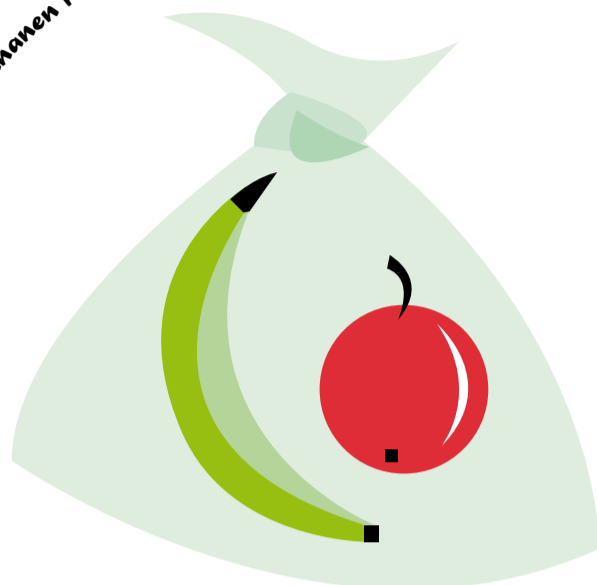


Du trenger:  
2 umodne bananer  
1 eple  
2 gjennomsiktige  
plastposer



Den andre grønne bananen legges i den andre posen.

Legg den ene grønne bananen i en pose sammen med et modent eple

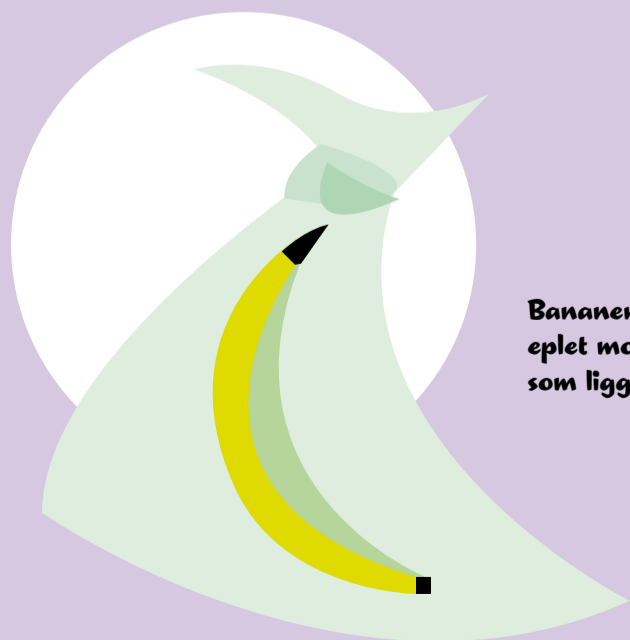
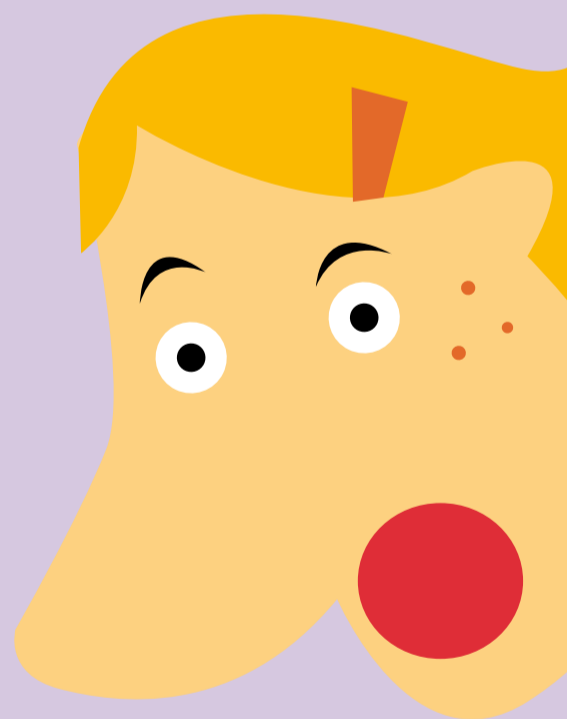


Knytt begge posene sammen i toppen.

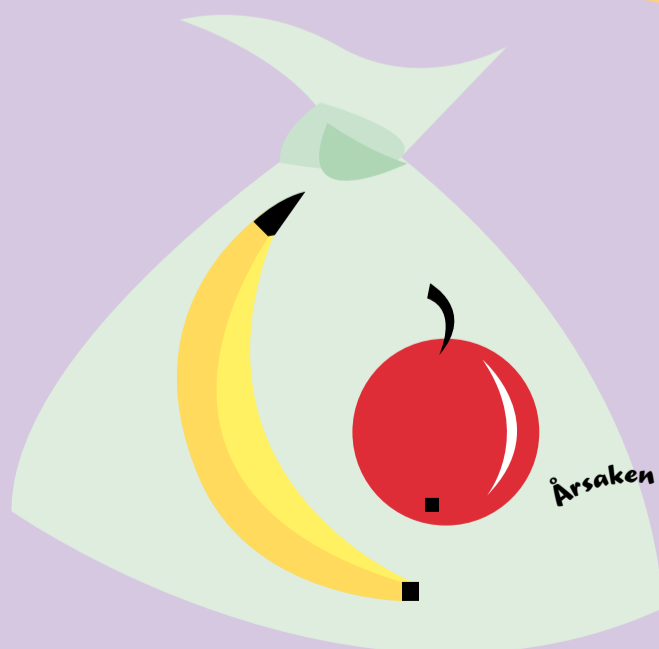
La det gå 2-5 dager.



## Hva skjer?



Bananen som legges sammen med eplet modner forttere enn bananen som ligger alene.



Årsaken er at eplet utvikler gassen etylengass.